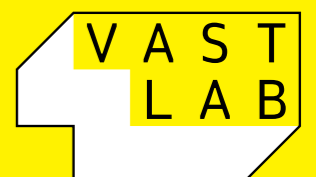


HOW TO CREATE LIVING SPACES

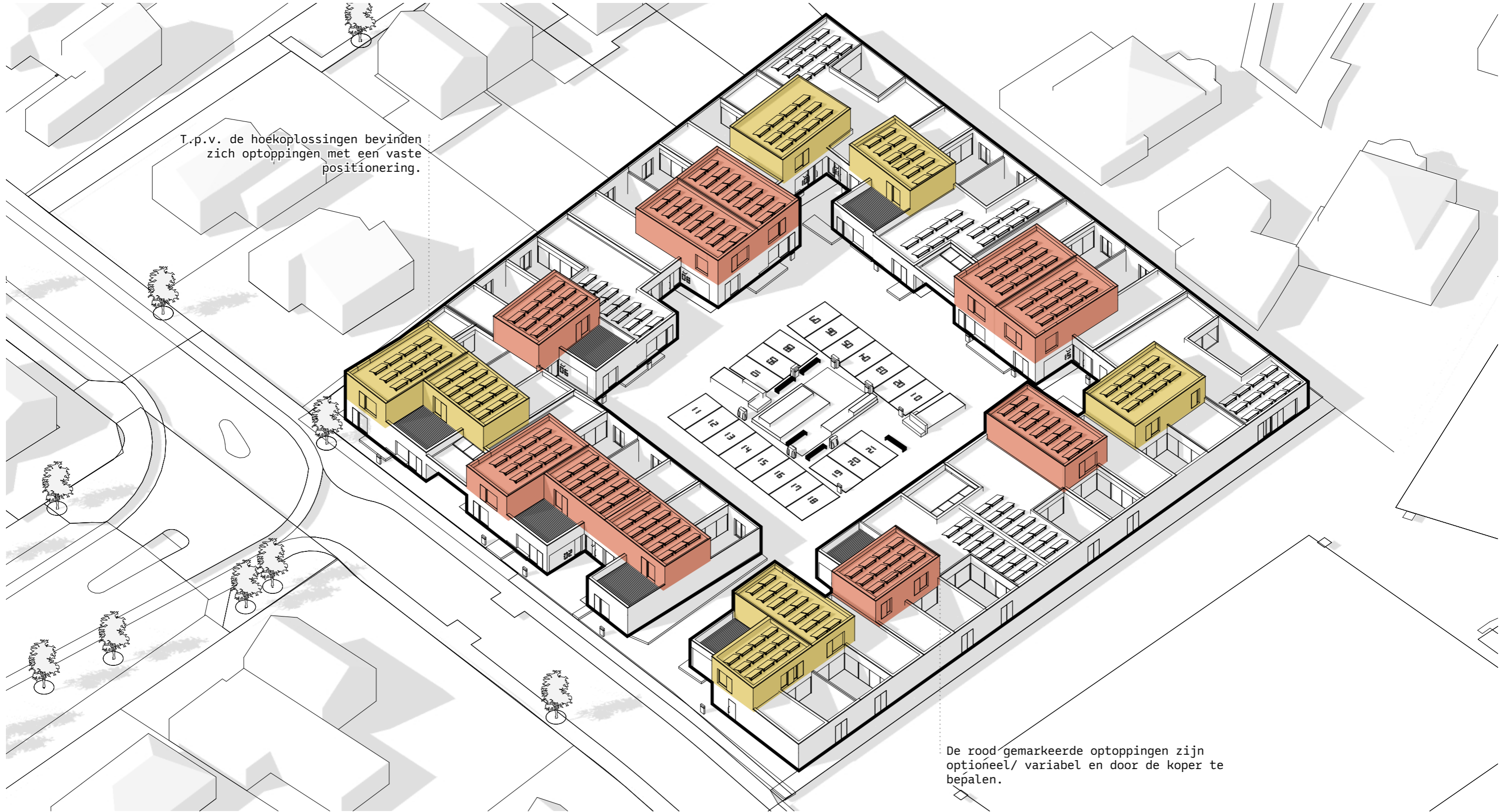
deel 2 - overzicht van het plan + plattegronden

PROJECTPRESENTATIE: BLOK, 23 WONINGEN IN PRINSENBEEK



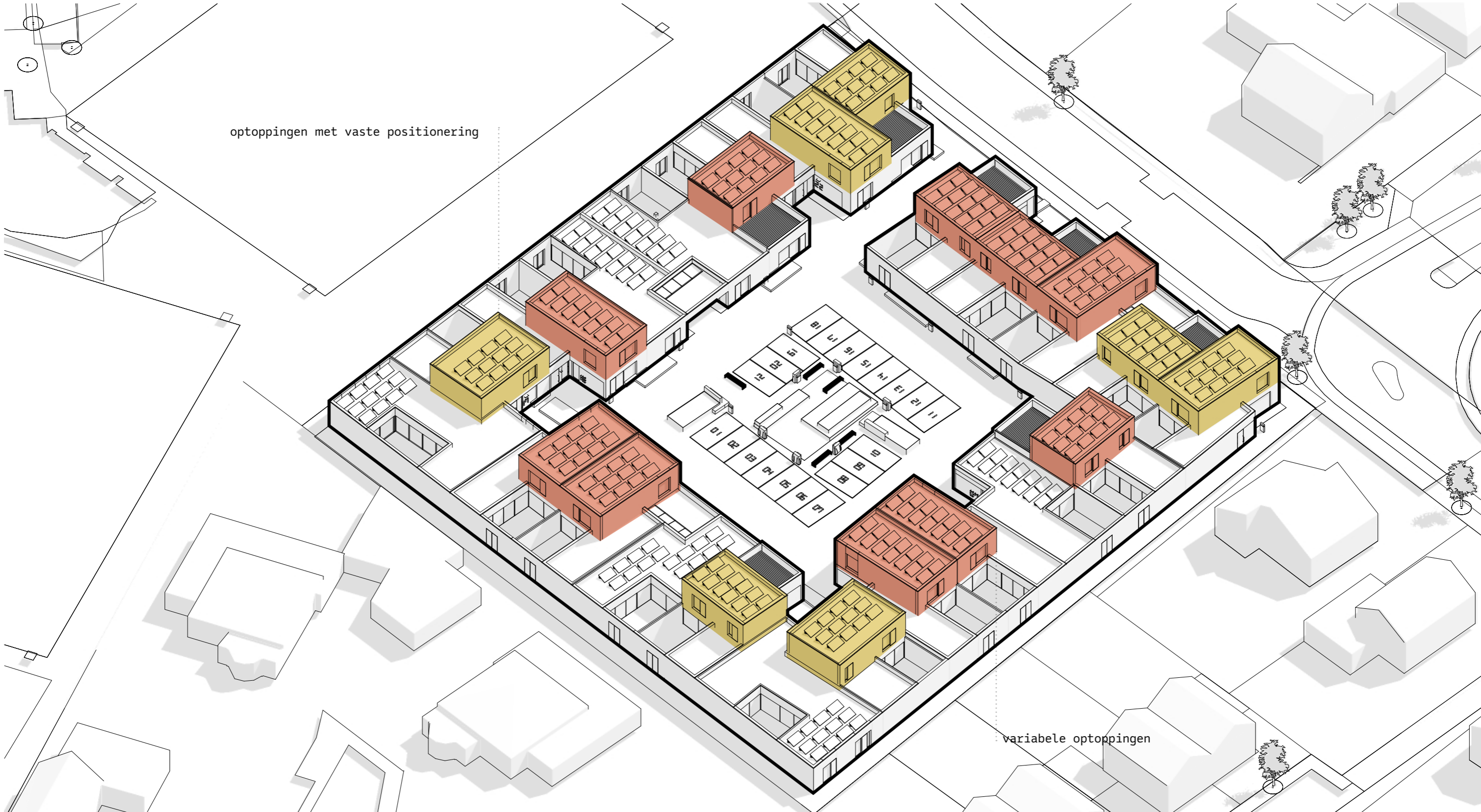
Isometrie.

T.p.v. de hoekoplossingen bevinden zich optoppingen met een vaste positionering.



De rood gemarkeerde optoppingen zijn optioneel/ variabel en door de koper te bepalen.

Isometrie.

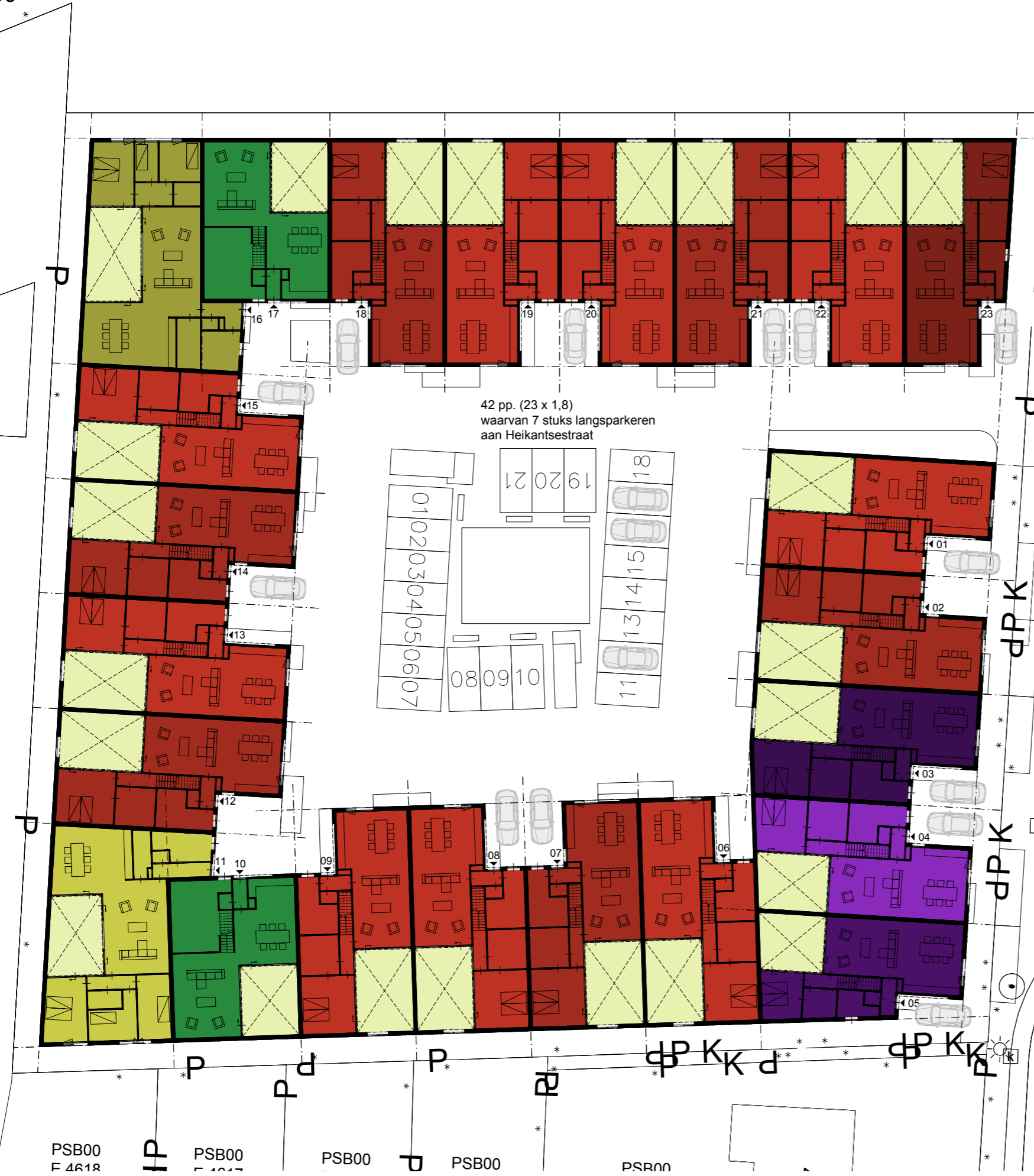


optoppingen met vaste positionering

variabele optoppingen

Situatie nieuw ¹⁹⁵ begane grond
 schaal 1:350

H 1794



42 pp. (23 x 1,8)
 waarvan 7 stuks langsparkeren
 aan Heikantsestraat

Heikantsestraat

PSB00 E 4618 IP PSB00 E 4617 PSB00 PSB00 PSB00

PSB00 E 5497

PSB00 E 5498

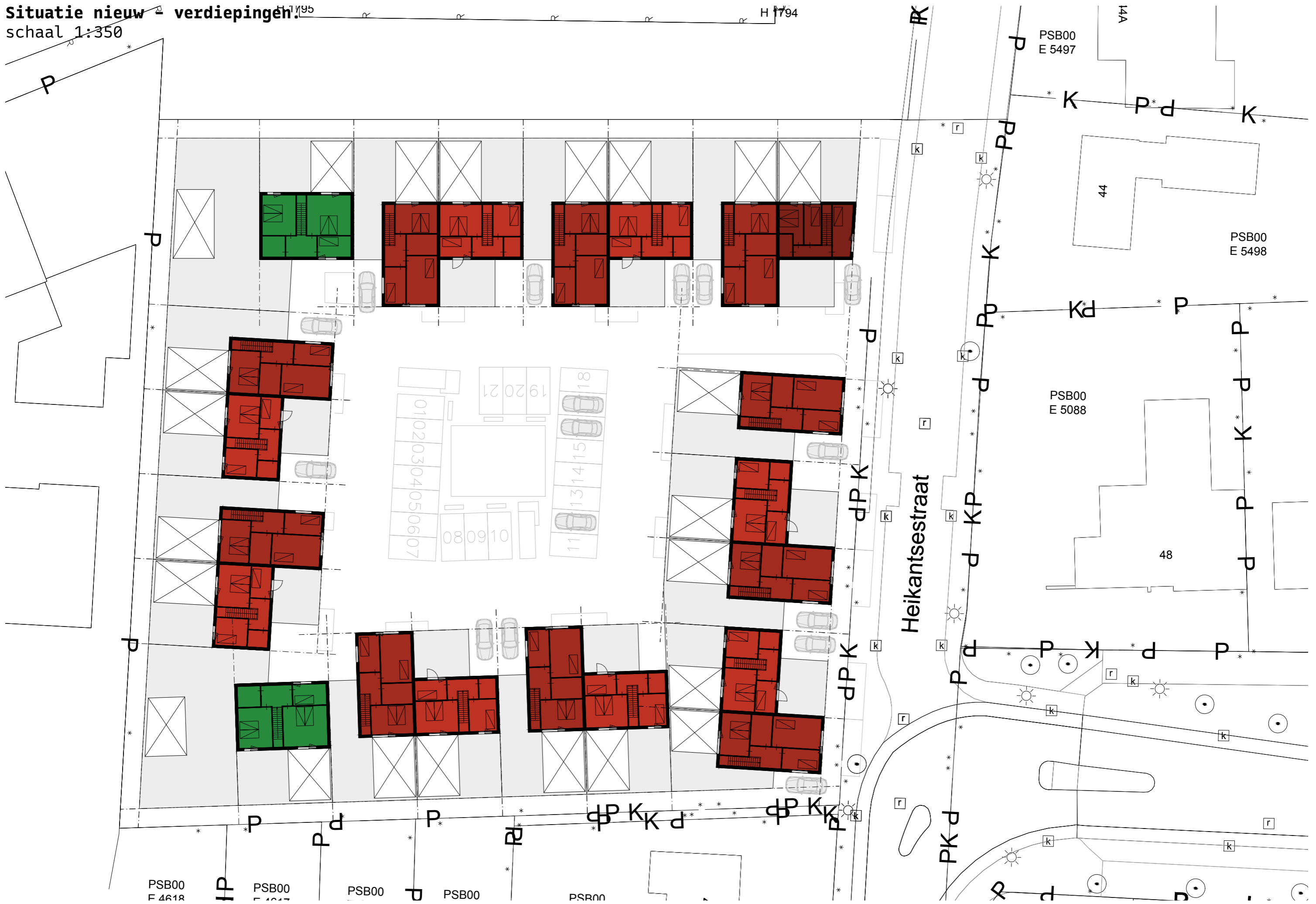
PSB00 E 5088

48

14A



Situatie nieuw verdiepingen.
schaal 1:350



PSB00
E 4618

IP
PSB00
E 4617

PSB00
E 4616

PSB00
E 4615

PSB00
E 4614

PSB00
E 5497

PSB00
E 5088

PSB00
E 5498

Heikantsestraat

44

48

14A

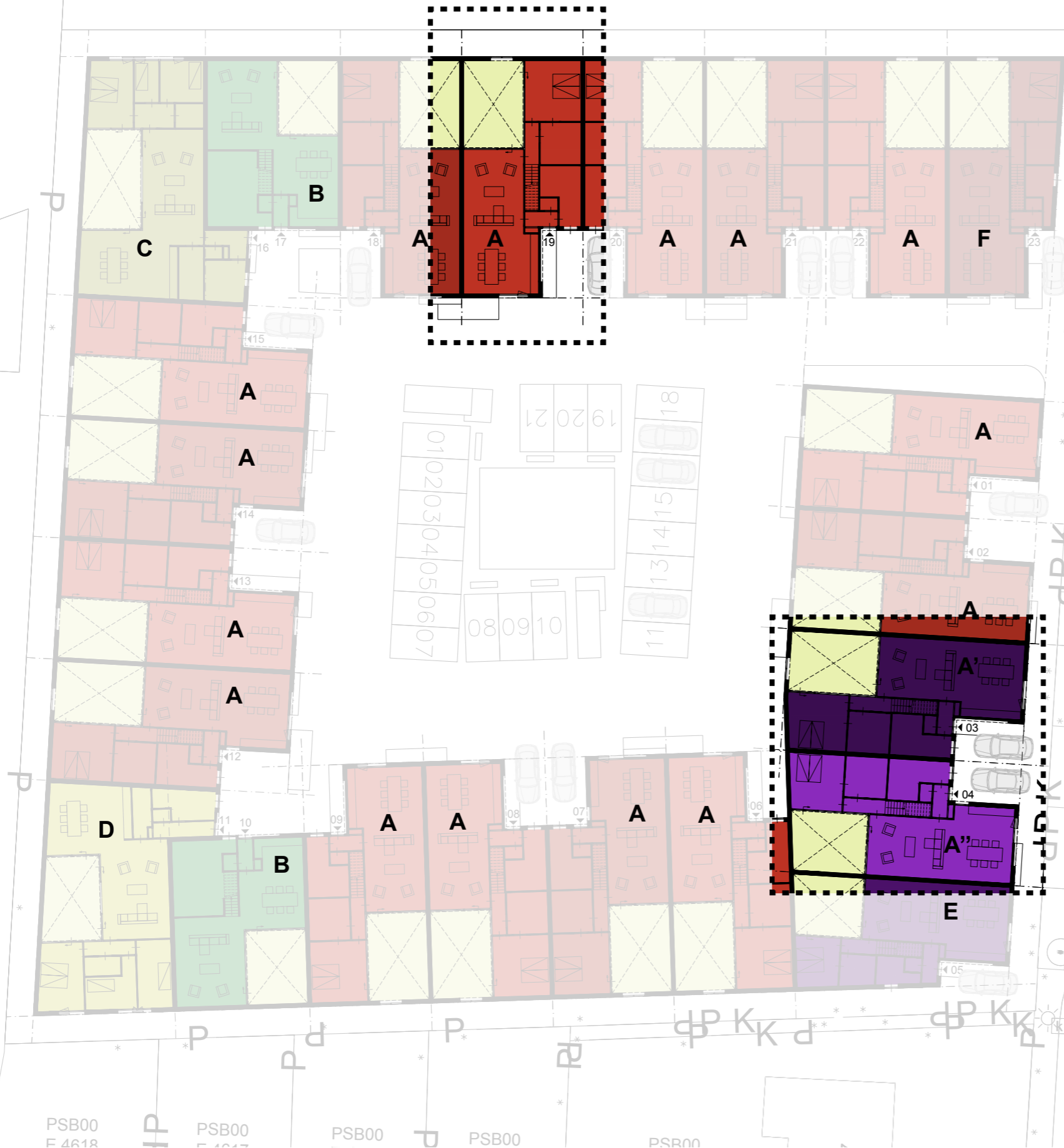
H 1794

H 1795

type A (+ varianten)

H 1795

H 1794



Heikantsestraat

PSB00
F 4618

PSB00

PSB00

PSB00

PSR00

PSB00
E 5497

PSB00
E 5498

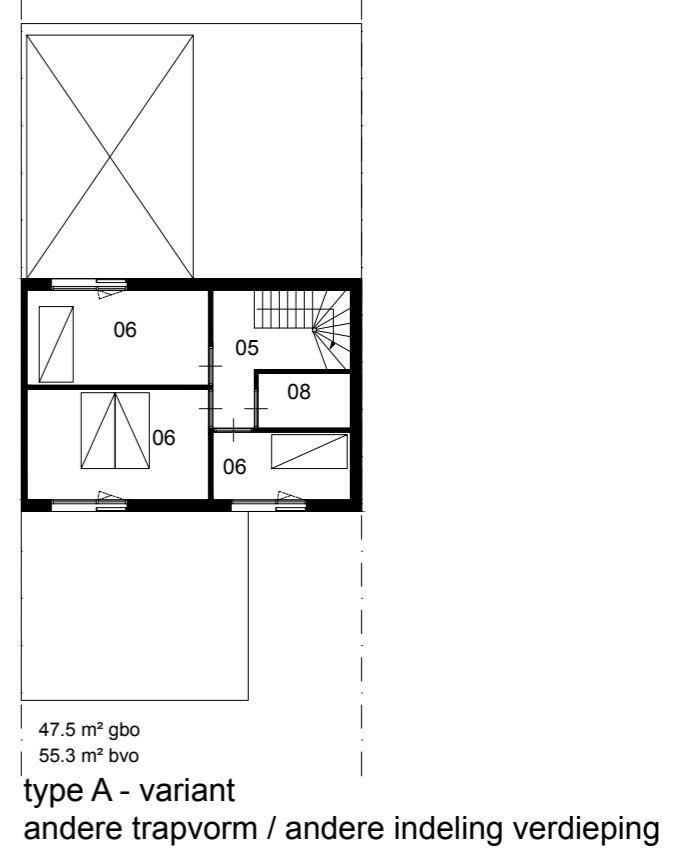
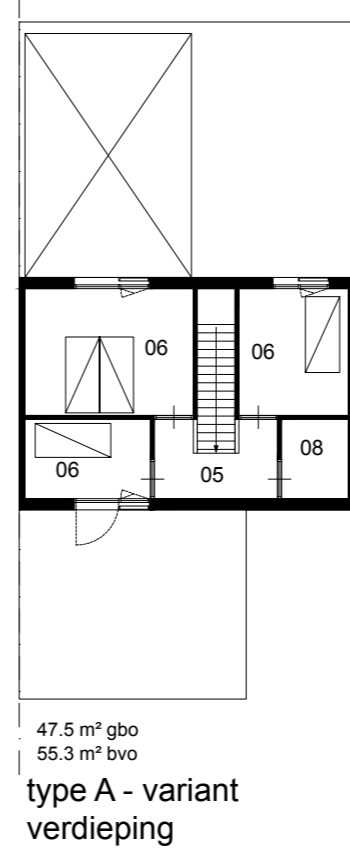
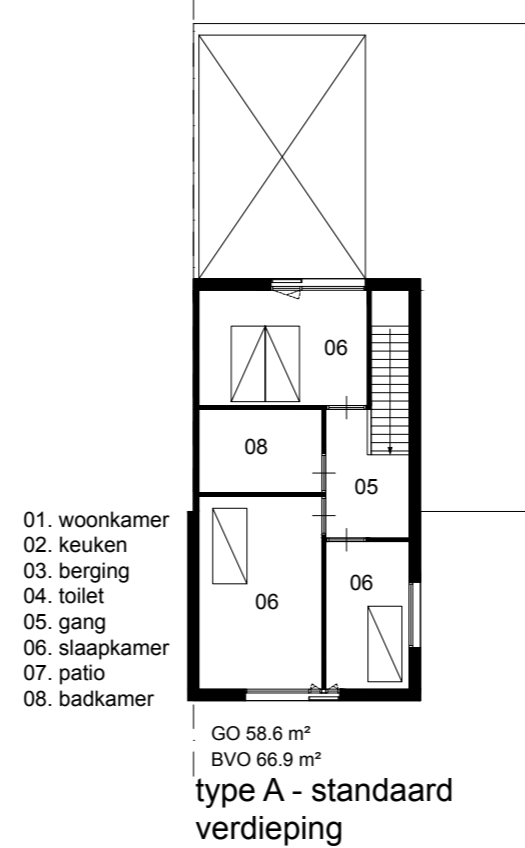
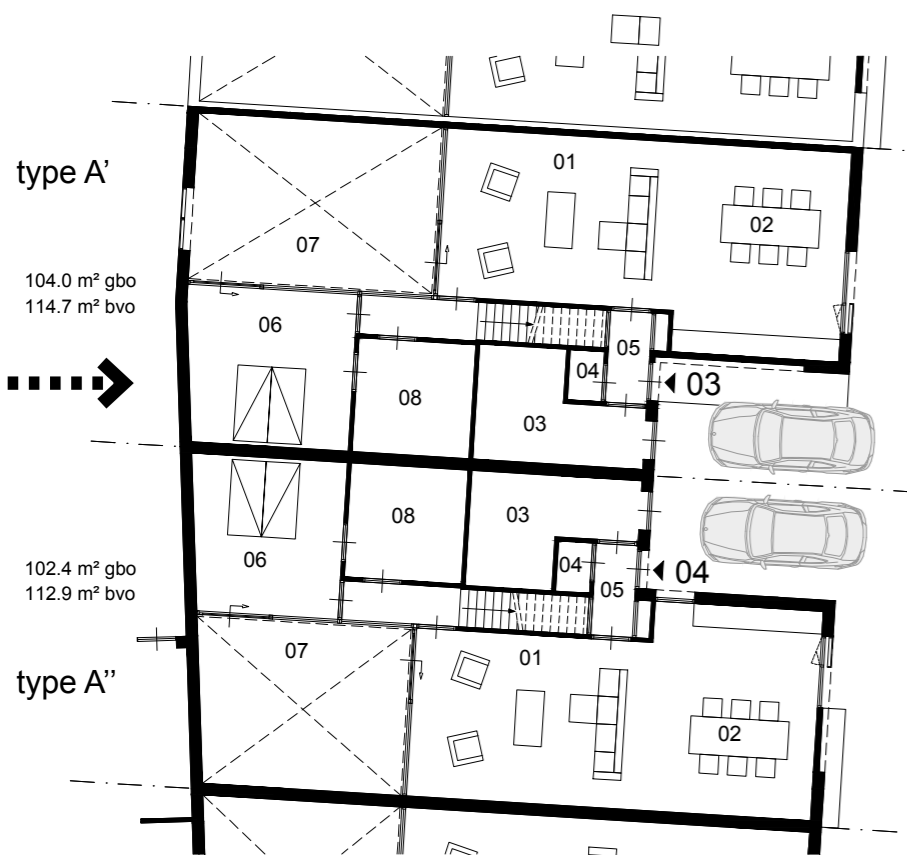
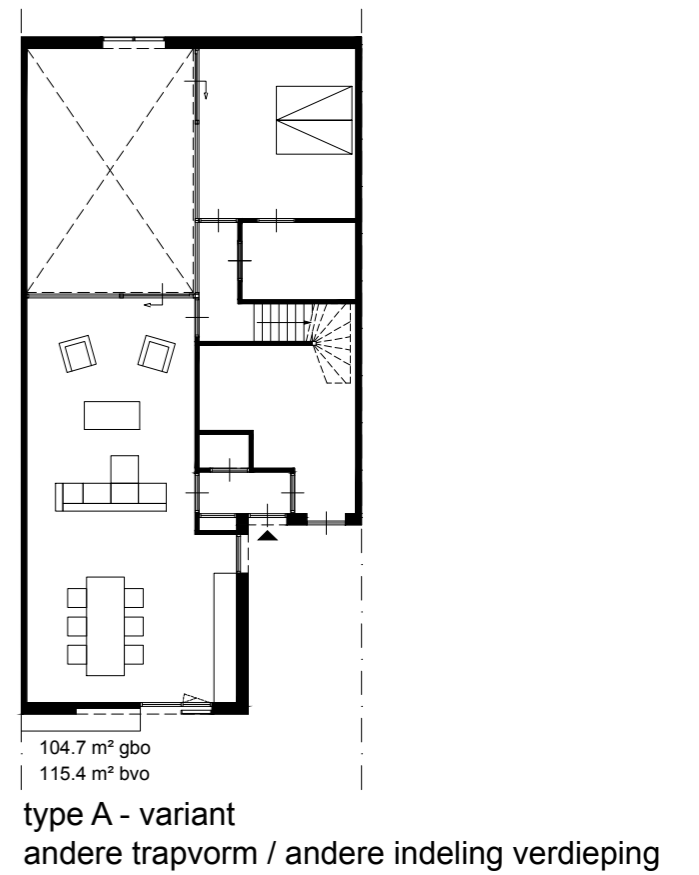
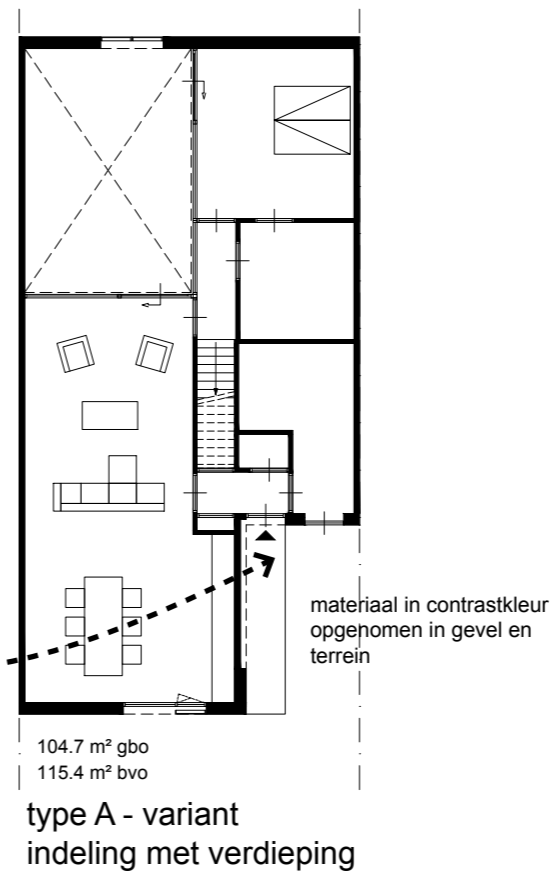
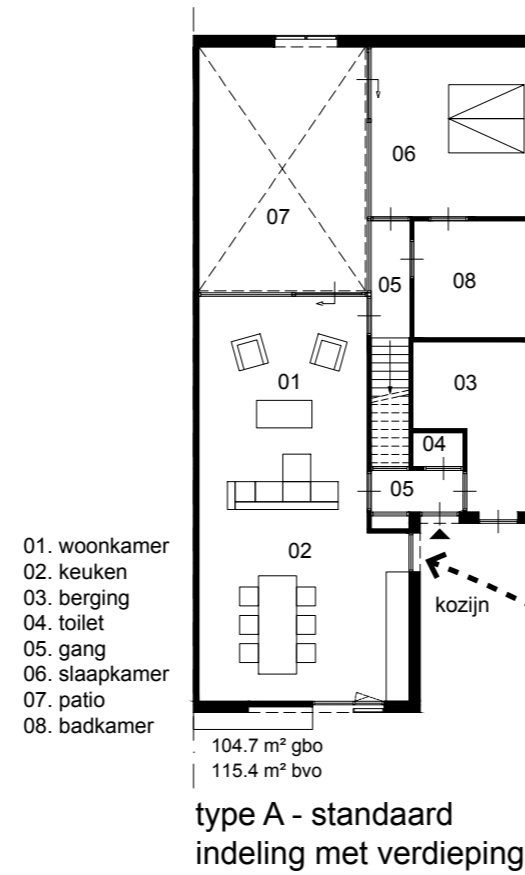
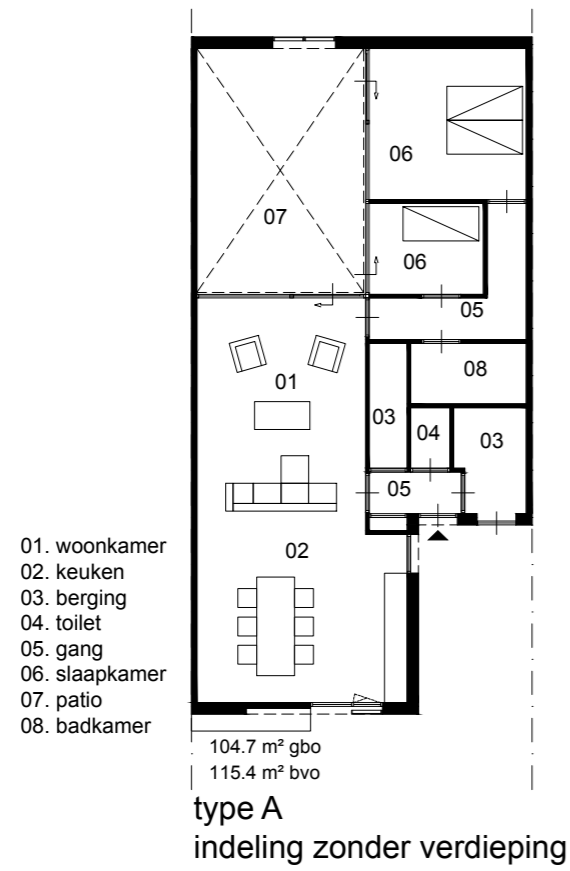
PSB00
E 5088

14A

44

48

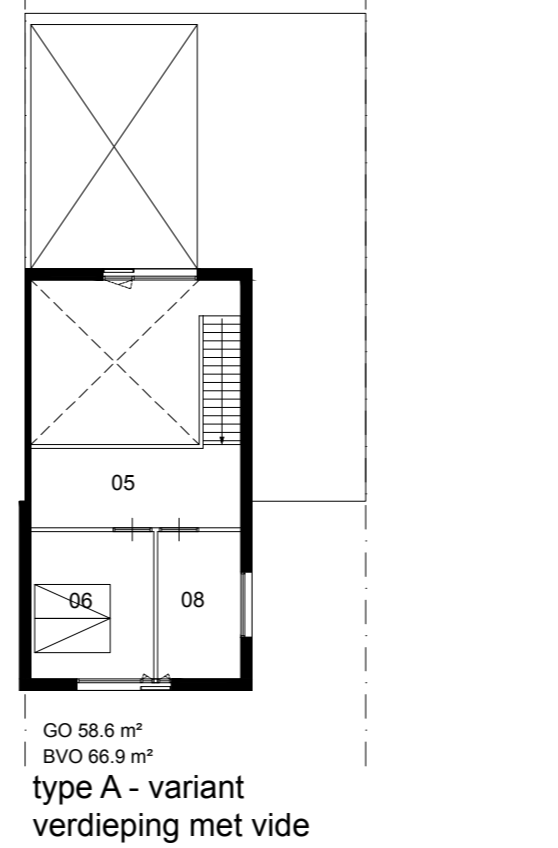
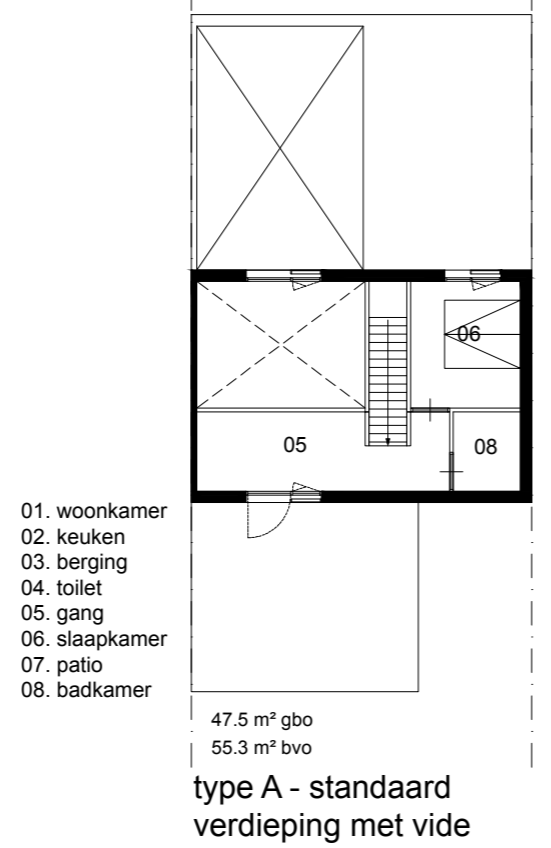
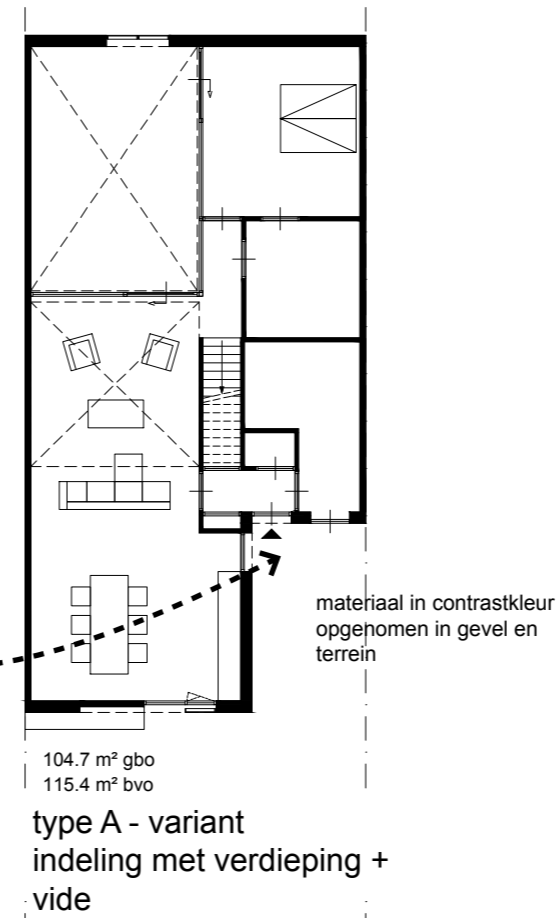
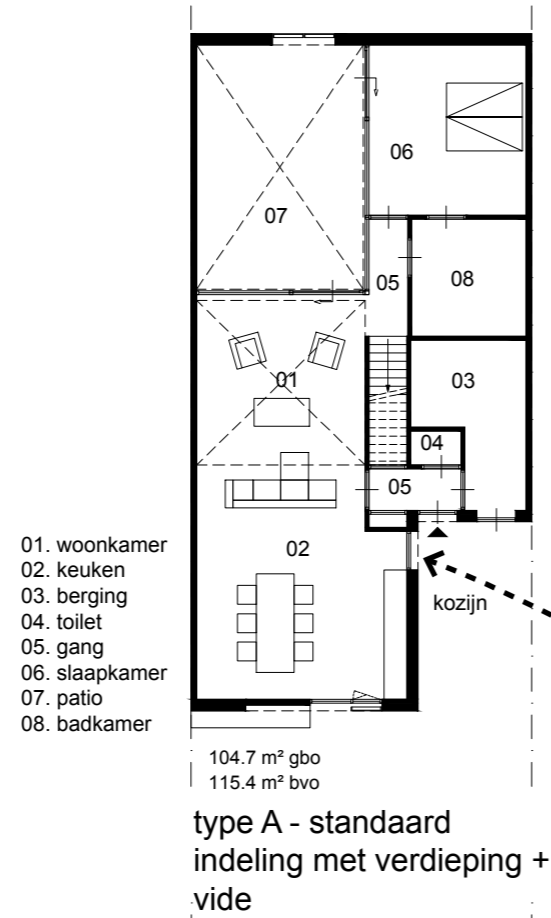
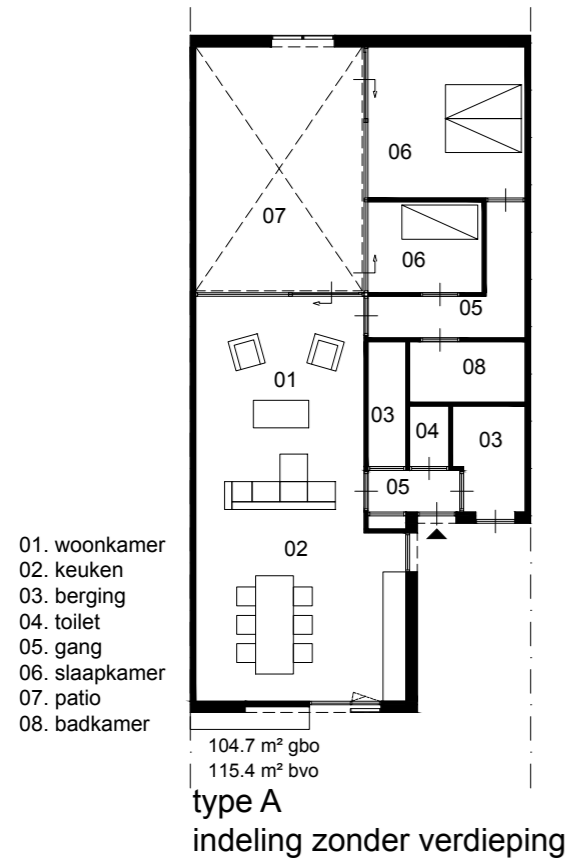
type A (+ varianten)



type A (+ varianten)



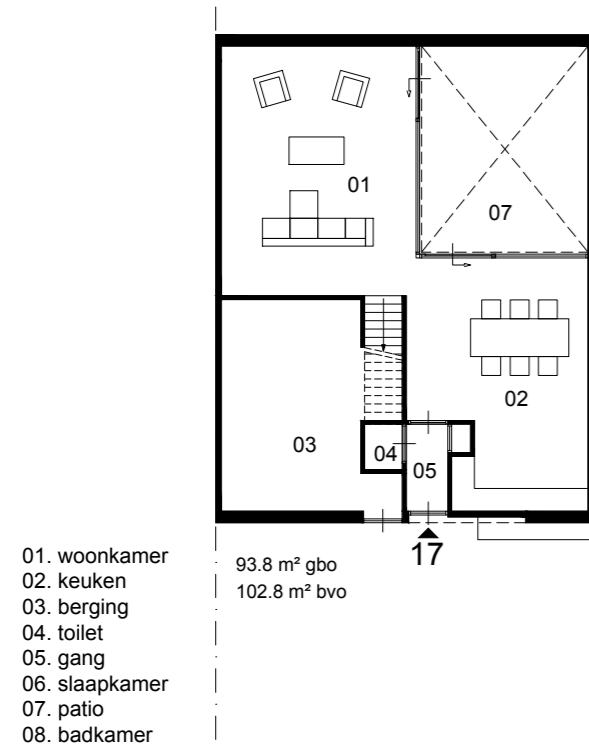
type A (varianten met vide)



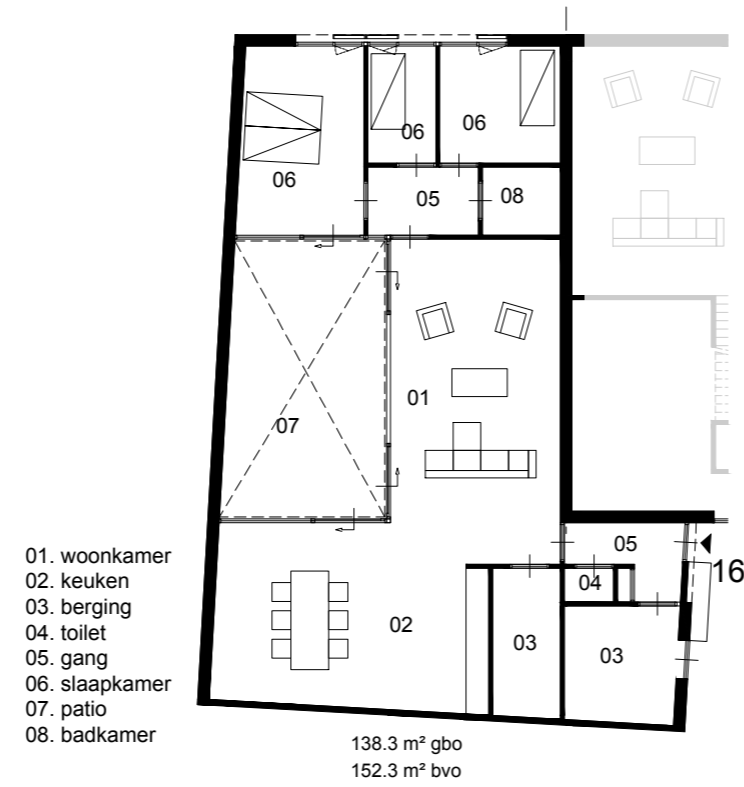
type B, type C en type D



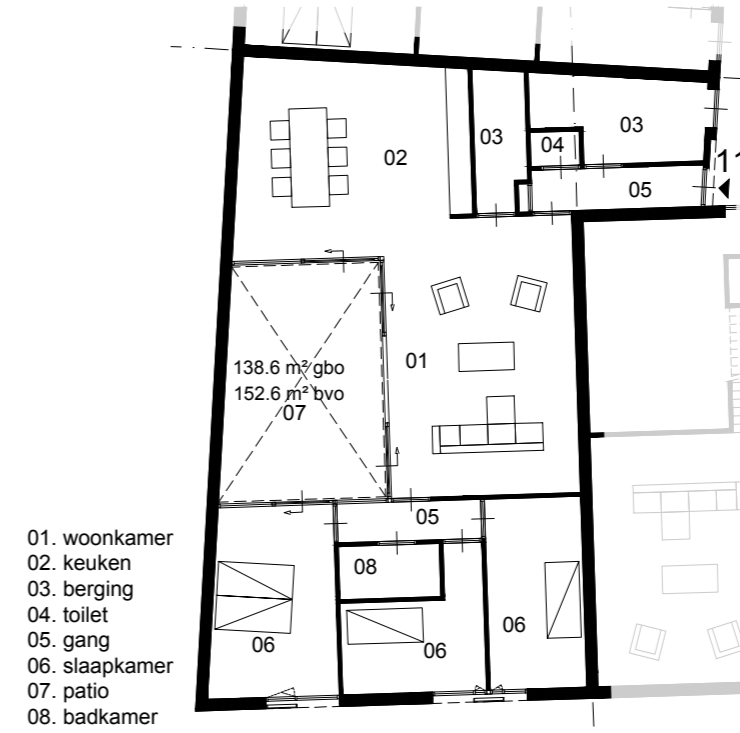
type B, type C en type D



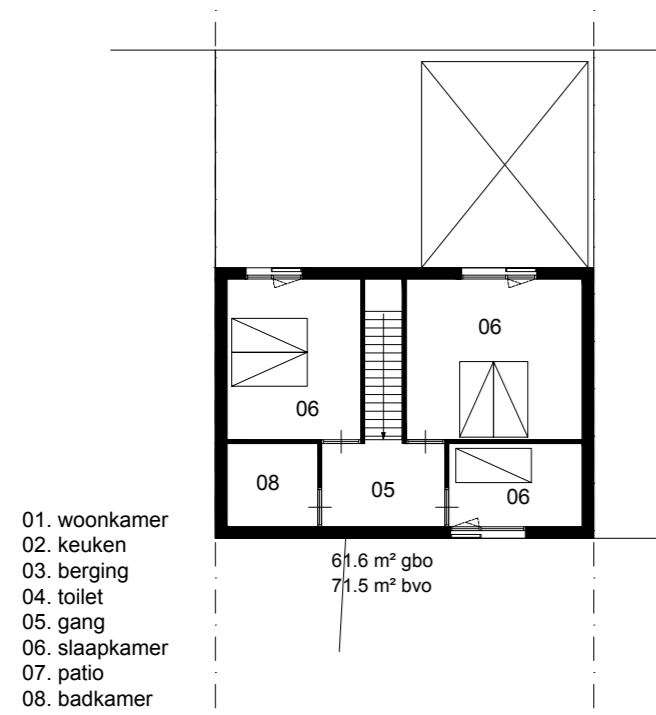
type B



type C
(geen verdieping)



type D
(geen verdieping)

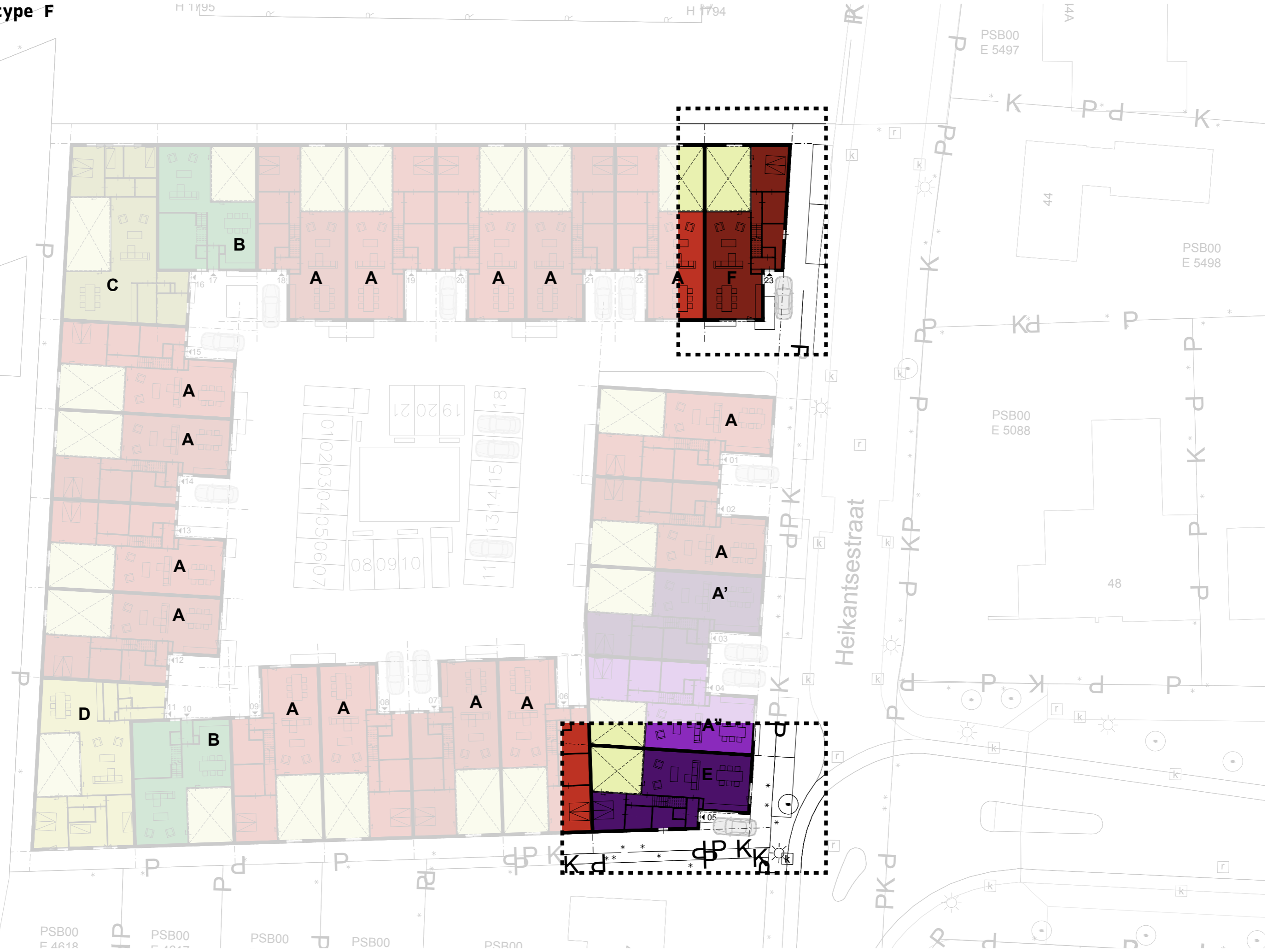


type B
verdieping

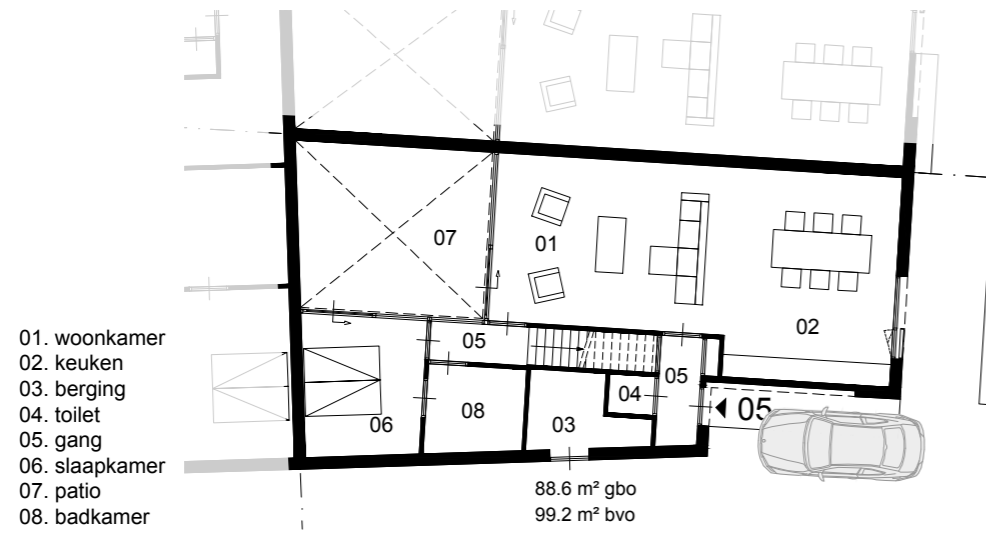
type E en type F

H 1195

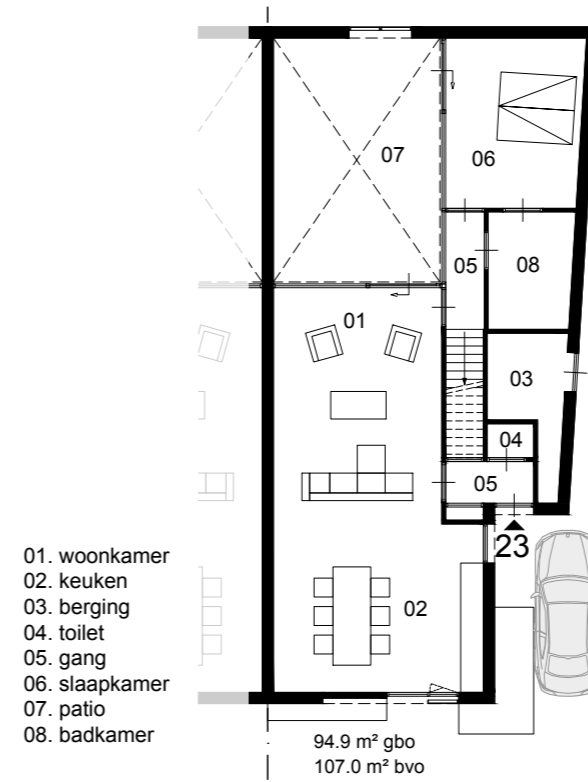
H 1794



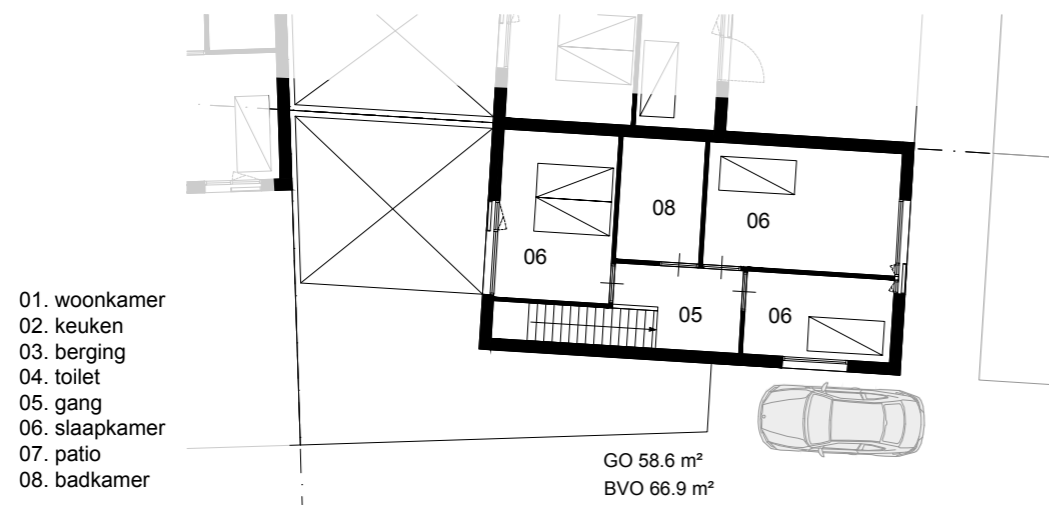
type E en type F



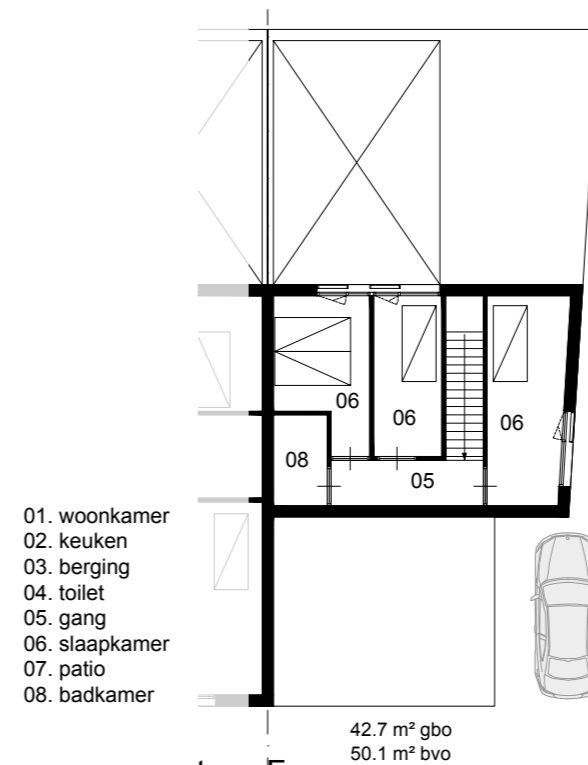
type E



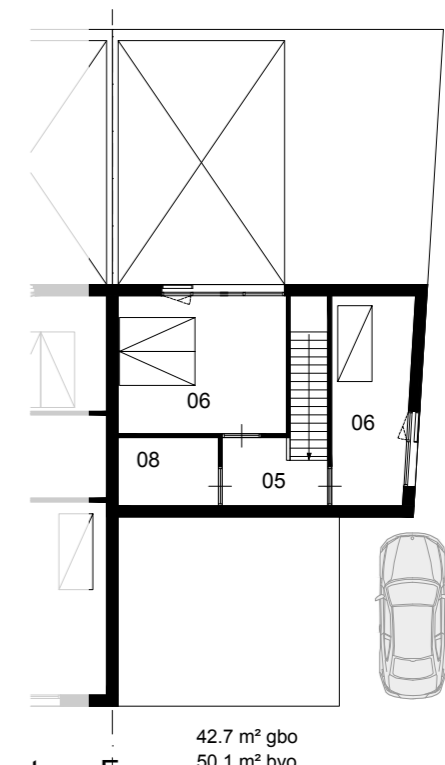
type F



type E - verdieping
standaard als type A



type F
verdieping



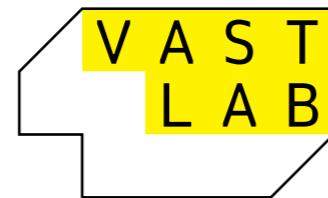
type F
verdieping alternatief

Colofon



Projectontwikkeling

Wij zijn creators. Meesters in het bedenken én realiseren van creatieve vastgoed-oplossingen. Wij worden enthousiast van nieuwe samenwerkingsverbanden en innovatieve technieken. Maar vooral van hoge klant eisen. Vastlab richt zich namelijk op de behoefte aan duurzame, kwalitatieve woonconcepten. Samen met flexibele teams van specialisten werken we verrassende ideeën uit tot hoogwaardige oplossingen.



Architectuur
JMW architecten

Bouw
Bouwbedrijf BOOT

Communicatie
Smidswater/Battery